



Metal Office

Workplace Storage Solutions

RRP Trade Price List January 2023

Goodwood

Double Door Cupboards & Internals pg. 3-4
Lateral Filing Drawers pg. 5
Side Opening Tambours & Internals pg.6-7
Recycle Cabinets pg.8
Sliding Door Cabinets pg.10
Personal Lockers & Options pg. 11-13
Pedestals pg.14
Accessories pg.15

Goodwood Plus

Double Door Cupboards & Internals pg. 16-17
Lateral Filing Drawers pg.18
Recycle Cabinets pg.19
Storage Towers pg.20
Pedestals pg.21
Under Desk Drawer pg.22

Nest Lockers

Nest Lockers & Options pg.23-24

Guides, Specs + T&C's

Finishes pg.25
Guide to Locks pg.26
Guide to Options pg. 27
Guide to Internals pg.28
Product Specifications pg.29-30
Terms & Conditions pg.31-32

Est.1982, Metal Office is an award-winning British designer and manufacturer of steel storage, lockers & pedestals for the workplace.

Made in Great Britain

Our storage is proudly designed & manufactured in Suffolk, England. We source our materials locally where possible and use the latest technology & energy-efficient manufacturing equipment to make exceptional products with minimal impact on the environment.

Environment in mind

As an ISO14001 registered business, we take great pride in manufacturing our products in an ethical and sustainable way, ensuring impact on the environment is kept to an absolute minimum.

15 year Guarantee

Our storage has been tested by leading industry test facilities, and is proven to meet the needs of the most demanding offices. For peace of mind we offer a 15 year guarantee and being UK based means we're here for you if you need us.

Custom Designs

We have an award-winning in-house design team that create products with function & form, designed to suit your storage needs, space and style. Simply get in touch to discuss your requirements.

First Class Service

We pride ourselves on our service, it's the backbone of our company. Expect fast response times, dedicated personal service, great products and on-time deliveries!

Goodwood Cupboards



800w x 470d

Height	Rows of A4*	Code	RRP
719mm	2	88209	£715.78
995mm	2	87009	£734.97
1085mm	3	87029	£755.72
1190mm	3	87017	£776.49
1299mm	3	87011	£818.02
1545mm	4	88280	£858.91
1791mm	5	87013	£917.64
1945mm	5	87015	£986.14

1000w x 470d

Height	Rows of A4*	Code	RRP
719mm	2	88208	£758.20
995mm	2	87008	£779.44
1085mm	3	87027	£801.42
1190mm	3	87016	£823.36
1299mm	3	87010	£867.28
1545mm	4	87298	£910.65
1791mm	5	87012	£967.95
1945mm	5	87014	£1,037.20

Specification

- Welded internal frames for strength & stability
- Single skinned doors with soft close hinges
- Full length handles
- Full range of internal options
- Adjustable shelf positions
- Key lock (500 differs / mastered)
- Levelling feet (+15mm)
- UK designed & manufactured
- 15 year guarantee

Finishes: RAL 9010, 9016, 7035, 9006 and 9005
 N.B. Other colours are available on request - POA

Cupboard Internals



800w x 470d

Internal Fittings	Code	RRP
10mm Plain Steel Shelf	81653	£59.84
25mm Combination Shelf	81657	£70.97
25mm Adjustable Combination Shelf	81870	£88.67
Pull Out Filing Frame	81659	£202.59
Drop in Drawer (Pull Out Filing Frame)	81842	£158.24
Coat Shelf with Underside Rail	81675	£115.78
Slotted Steel Shelf	81655	£71.99
Pack of 5 Metal Dividers (Slotted Shelf)	81002	£69.50

1000w x 470d

Internal Fittings	Code	RRP
10mm Plain Steel Shelf	81652	£62.37
25mm Combination Shelf	81656	£73.77
25mm Adjustable Combination Shelf	81871	£92.20
Pull Out Filing Frame	81658	£206.46
Drop in Drawer (Pull Out Filing Frame)	88003	£167.63
Coat Shelf with Underside Rail	81673	£117.28
Slotted Steel Shelf	81654	£74.78
Pack of 5 Metal Dividers (Slotted Shelf)	81002	£69.50

Internal Fittings

Internals are finished in RAL 9005 Black as standard and come factory fitted to your specification.

Internals are height adjustable to your preference via our cabinets built in ladder track system. We advise that pull-out filing frames are installed in the lower half of cupboards. A safety interlock comes as standard.

Finishes: RAL 9005

N.B. Other colours are available on request - POA

Goodwood Drawers



800w x 470d

Height	Drawers	Code	RRP
719mm	2	88219	£1,000.81
995mm	3	87003	£1,195.48
1085mm	3	87080	£1,226.90
1299mm	4	87005	£1,469.82

1000w x 470d

Height	Drawers	Code	RRP
719mm	2	88218	£1,061.22
995mm	3	87002	£1,265.52
1085mm	3	87026	£1,298.76
1299mm	4	87004	£1,543.20

Specification

- Welded internal frames for strength & stability
- Full length handles
- Fully extending drawers
- Multi-ball bearing runners
- Drawer safety interlock - one at a time opening
- Adjustable rear rail for A4/FC hanging files
- Drawers file 'spine-up' A4 lever arch files
- Key locks (500 differs / mastered)
- Levelling feet
- UK designed & manufactured
- 15 year guarantee

Finishes: RAL 9010, 9016, 7035, 9006 and 9005
 N.B. Other colours are available on request - POA

Drawer Options	Code	RRP
Counterbalance Weight 800w	87051	£59.61
Counterbalance Weight 1000w	87050	£59.61
Individually Locking Drawers x2	IL2	£145.53
Individually Locking Drawers x3	IL3	£218.26
Individually Locking Drawers x4	IL4	£290.99



800w x 470d – Single Door

Height	Rows of A4*	Code	RRP
719mm	1	87481	£701.48
995mm	2	87405	£733.63
1085mm	2	87437	£770.35
1190mm	3	87408	£798.05
1299mm	3	87411	£862.46
1545mm	4	87439	£905.59
1791mm	5	87414	£985.83
1945mm	5	87417	£1,085.62

1000w x 470d – Double Door

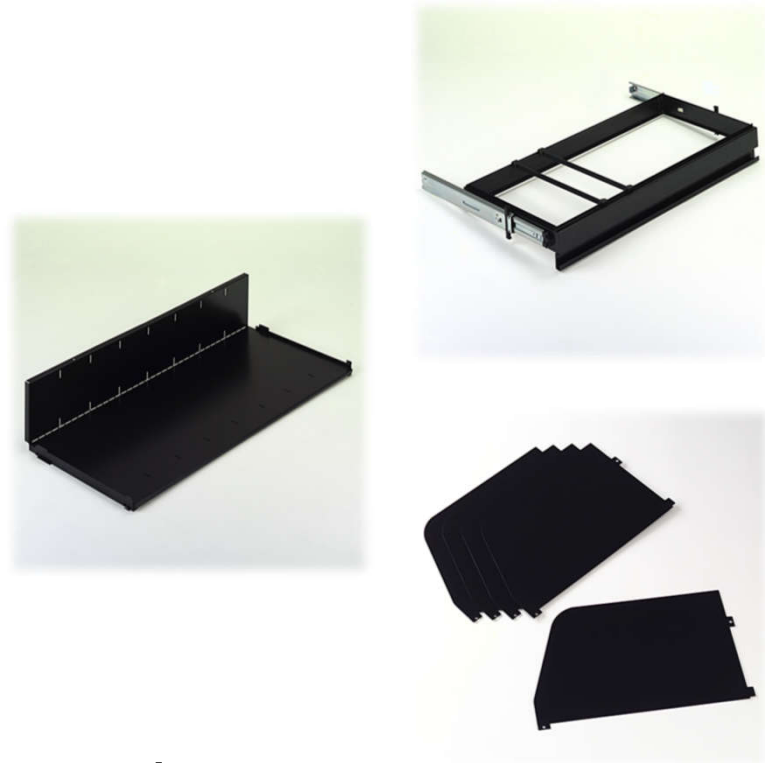
Height	Rows of A4*	Code	RRP
719mm	1	87480	£762.13
995mm	2	87403	£802.55
1085mm	2	87442	£842.65
1190mm	3	87406	£870.91
1299mm	3	87409	£939.29
1545mm	4	87438	£986.25
1791mm	5	87412	£1,066.13
1945mm	5	87415	£1,153.38

Specification

Welded internal frames for strength & stability
 Inset moulded track for smooth door operation
 Sliding tambour doors with inset handle
 Full range of internal options
 Adjustable shelf positions
 Key lock (1000 differs / mastered)
 Levelling feet
 UK designed & manufactured
 15 year guarantee
 Doors available in: White, Silver, Grey and Black

Finishes: RAL 9010, 9016, 7035, 9006 and 9005
 N.B. Other colours are available on request - POA

Tambour Internals



800w x 470d

Internal Fittings	Code	RRP
10mm Plain Steel Shelf	81707	£59.84
25mm Combination Shelf	81710	£70.97
25mm Adjustable Combination Shelf	81808	£88.67
Pull Out Filing Frame	81715	£202.59
Drop in Drawer (Pull Out Filing Frame)	81741	£158.24
Coat Shelf with Underside Rail	81724	£115.78
Slotted Steel Shelf	81713	£71.99
Pack of 5 Metal Dividers (Slotted Shelf)	81002	£69.50

1000w x 470d

Internal Fittings	Code	RRP
10mm Plain Steel Shelf	81704	£62.37
25mm Combination Shelf	81708	£73.77
25mm Adjustable Combination Shelf	81807	£92.20
Pull Out Filing Frame	81705	£206.46
Drop in Drawer (Pull Out Filing Frame)	81706	£167.63
Coat Shelf with Underside Rail	81722	£117.28
Slotted Steel Shelf	81711	£74.78
Pack of 5 Metal Dividers (Slotted Shelf)	81002	£69.50

Internal Fittings

Internals are finished in RAL 9005 Black as standard and come factory fitted to your specification.

Internals are height adjustable to your preference via our cabinets built in ladder track system. We advise that pull-out filing frames are installed in the lower half of cupboards. A safety interlock comes as standard.

Finishes: RAL 9005

N.B. Other colours are available on request - POA



Specification

Welded internal frames for strength & stability
 Full length handles
 Stiffened single skinned doors with soft close hinges
 1x rectangular cut-out per door
 2x black metal bins with cut-out handles
 Key lock (500 differs / mastered)
 Levelling feet (+15mm)
 UK designed & manufactured
 15 year guarantee
 Vinyl signage available – POA

Finishes: RAL 9010, 9016, 7035, 9006 and 9005
N.B. Other colours are available on request - POA

800w x 470d

Height	Recycle Points	Code	RRP
995mm	2	88260	£1,183.25
1085mm	2	88235	£1,207.26
1190mm	2	88337	£1,231.40

1000w x 470d

Height	Recycle Points	Code	RRP
995mm	2	88261	£1,234.71
1085mm	2	88599	£1,260.11
1190mm	2	88338	£1,285.32

Options	Code	RRP
Right Hand Confidential Security Slot	RH-SEC	£56.88
Left Hand Confidential Security Slot	LH-SEC	£56.88
Vinyl Signage for Recycle Points	VINY	POA

All Goodwood recycle cabinets include two steel recycle bins with rubber grommet handles – Bin sizing: 680h x 337w x 388d.

Recycling Bins



Specification

Welded, all steel construction
Square cut out to general & glass bins
Post slot opening to confidential bin
Key lock to confidential bin (500 differs / mastered)
General & glass bins exclude lock
Lifting lid to place & remove bin liners
Removable steel rail to hold bin liners in place
Rubber buffer feet to protect flooring
UK designed & manufactured
15 year guarantee
Vinyl signage available – POA

Finishes: RAL 9010, 9016, 7035, 9006 and 9005
N.B. Other colours are available on request - POA

General Waste Bin – 375w x 375d

Height	Recycle Points	Code	RRP
720mm	1	87551	£606.68

Confidential Bin – 375w x 375d

Height	Recycle Points	Code	RRP
720mm	1	87552	£663.60

Glass Waste Bin – 375w x 375d

Height	Recycle Points	Code	RRP
720mm	1	87551	£606.68

Bespoke individual recycle bins can be supplied. Please contact your sales representative for more information. All individual recycle bins exclude bin liners, which are to be supplied by others.

Goodwood Sliding Doors



719h x 457d

Width	Rows of A4	Code	RRP
1200mm	2	87254	£1,420.11
1400mm	2	88324	£1,791.36
1600mm	2	87272	£2,021.84

1114h x 457d

Width	Rows of A4	Code	RRP
1200mm	3	87260	£1,542.94
1400mm	3	88325	£1,947.31
1600mm	3	87252	£2,237.13

Specification

Welded internal frames for strength & stability
 Easy glide sliding doors with soft close damper system
 Central partition - internals required for each half
 Adjustable shelf positions
 No top - supplied ready to accept metal, MFC or glass
 Recessed handles
 Key locks (500 differs / mastered)
 Levelling feet
 UK designed & manufactured
 15 year guarantee

Finishes: RAL 9010, 9016, 7035, 9006 and 9005
 N.B. Other colours are available on request - POA

Options	Code	RRP
2mm Steel Trim Top 1200w	87261	£124.59
2mm Steel Trim Top 1400w	88326	£128.25
2mm Steel Trim Top 1600w	87262	£131.88
Plain Steel Shelf 600w (1200w Case)	87258	£60.69
Plain Steel Shelf 700w (1400w Case)	88327	£61.72
Plain Steel Shelf 800w (1600w Case)	87264	£62.82
Combination Shelf 600w (1200w Case)	87255	£67.07
Combination Shelf 700w (1400w Case)	88328	£69.01
Combination Shelf 800w (1600w Case)	87256	£70.97

Goodwood Lockers – Single



420w x 470d

Height	Configuration	Code	RRP
719mm	2h x 1w	87249	£688.28
1190mm	3h x 1w	81861	£747.38
1791mm	4h x 1w	87134	£841.68
1928mm	5h x 1w	81862	£933.65

520w x 470d

Height	Configuration	Code	RRP
719mm	2h x 1w	81863	£736.40
1190mm	3h x 1w	81864	£810.91
1791mm	4h x 1w	87245	£909.59
1928mm	5h x 1w	87377	£994.97

Specification

- Welded internal frames for strength & stability
- Double skin doors
- Pressed label holders
- Innovative concealed hinge system
- Adjustable shelf positions
- Key locks (500 differs / mastered)
- Levelling feet
- UK designed & manufactured
- 15 year guarantee
- Custom door designs - POA

Finishes: RAL 9010, 9016, 7035, 9006 and 9005
N.B. Other colours are available on request - POA

Internal Compartment Sizes:

Height – 719h = 300mm / 1190h = 350mm / 1791h = 405mm / 1928h = 340mm
 Width – 420w = 360mm / 520w = 460mm
 Depth – All Lockers = 445mm

For locker options please see page 13. Remember to order your master keys.
 Other door configurations are available and we cater for custom designs.
 Contact us on: 01638 711 844 | info@metaloffice.co.uk

Goodwood Lockers – Double



800w x 470d

Height	Configuration	Code	RRP
719mm	2h x 2w	87213	£816.61
1190mm	3h x 2w	87031	£960.16
1791mm	4h x 2w	87033	£1,263.97
1928mm	5h x 2w	87039	£1,556.96

1000w x 470d

Height	Configuration	Code	RRP
719mm	2h x 2w	87371	£874.85
1190mm	3h x 2w	87030	£1,046.37
1791mm	4h x 2w	87032	£1,390.35
1928mm	5h x 2w	87037	£1,700.91

Specification

- Welded internal frames for strength & stability
- Double skin doors
- Pressed label holders
- Innovative concealed hinge system
- Adjustable shelf positions
- Key locks (500 differs / mastered)
- Levelling feet
- UK designed & manufactured
- 15 year guarantee
- Custom door designs - POA

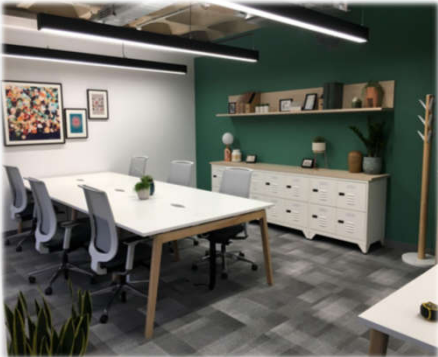
Finishes: RAL 9010, 9016, 7035, 9006 and 9005
N.B. Other colours are available on request - POA

Internal Compartment Sizes:

Height – 719h = 300mm / 1190h = 350mm / 1791h = 405mm / 1928h = 340mm
 Width – 800w = 360mm / 1000w = 460mm
 Depth – All Lockers = 445mm

For locker options please see page 13. Don't forget to order your master keys.
 Other door configurations are available and we cater for custom designs.
 Contact us on: 01638 711 844 | info@metaloffice.co.uk

Goodwood Locker Options



Locker Options

Options	Code	RRP
Mechanical Combination Lock - per door	SUD4	£62.50
Electronic Combination Lock - per door	GEMD	£87.23
Non-Networked RFID Lock - per door	PULS	£195.30
Bottom Compartment as Drawer - per door	LKDR	£149.73
Steel Shelf 400w (Suits 420w & 800w)	87867	£39.05
Steel Shelf 500w (Suits 520w & 1000w)	88672	£41.67
100mm High Adjustable Plinth 420w	PLIN42	£117.18
100mm High Adjustable Plinth 520w	PLIN52	£123.69
100mm High Adjustable Plinth 800w	PLIN80	£143.22
100mm High Adjustable Plinth 1000w	PLIN100	£156.24
Post Slot - per door	PS	£9.73
Accent Colour Doors	ACNT	POA
18mm MFC Doors	MFC	POA
Vinyl Numbers	VINY	POA
Louvred Vent Detail - per door	LVRD	£39.05
100mm High Sloping Locker Top	SLT	£79.84
Master Key (+£9.95 P&P)	MK	£24.11

If you have any questions about any of our locker or lock options, please get in touch with your sales representative.

Contact us on: 01638 711 844 | info@metaloffice.co.uk

Goodwood Pedestals



315w x 555d

Height	Drawers	Code	RRP
492mm	2	93060	£350.33
565mm	3	93073	£360.95
642mm	3	93071	£366.23

415w x 555d

Height	Drawers	Code	RRP
492mm	2	93000	£350.33
565mm	3	93020	£360.95
642mm	3	93011	£366.23

Options	Code	RRP
315mm Fabric Seat Cushion (Fixed)	CUSH315	£115.88
415mm Fabric Seat Cushion (Fixed)	CUSH415	£115.88
Mechanical Combination Lock	SUD4	£69.52
Master Key (+£9.95 P&P)	MK	£22.92

Contact us for bespoke pedestal designs, MFC or plywood fronts, alternative locking solutions and accent colours can be offered to suit your style and space.

info@metalloffice.co.uk / 01638 711 844.



Specification

Welded internal frames & base for strength & stability
 Rigid 18mm steel top
 Pressed one piece steel body
 Drop in pen tray & file bar
 Multi-ball bearing runners
 Concealed anti-tilt 5th castor
 Mobile castors
 Key locks (1000 differs / mastered)
 Recessed side pull for drawers
 UK designed & manufactured
 15 year guarantee

Finishes: RAL 9010, 9016, 7035, 9006 and 9005

N.B. Other colours are available on request - POA

Storage Accessories



Accessories 800w	Code	RRP
Metal Planter (Excl. Liner)	81596	£341.17
MFC Planter (Excl. Liner)	MFCP80	£379.14
Planter Liner Box (Set of 2)	16880	£132.65
Frame Top (MFC Top & Base)	FRT80	£587.86
395h Top Box (Open Back)	OTB80	£475.66
395h Top Box (Closed Back)	CTB80	£495.76
Perforated Cupboard Doors	PERF	POA
MFC Storage Top	MFC	£106.38
Special RAL Finishes	SRAL	POA

1000w	Code	RRP
Metal Planter (Excl. Liner)	81597	£355.38
MFC Planter (Excl. Liner)	MFCP100	£392.18
Planter Liner Box (Set of 2)	16881	£133.99
Frame Top (MFC Top & Base)	FRT100	£617.17
395h Top Box (Open Back)	OTB100	£489.06
395h Top Box (Closed Back)	CTB100	£509.16
Perforated Cupboard Doors	PERF	POA
MFC Storage Top	MFC	£113.99
Special RAL Finishes	SRAL	POA
Master Keys (+£9.95 P&P)	MK	£24.30

Goodwood Plus Cupboards



800w x 470d

Height	Rows of A4*	Code	RRP
719mm	2	88307	£801.69
995mm	2	88309	£823.16
1085mm	3	88311	£846.41
1190mm	3	88313	£869.67
1299mm	3	88315	£916.20
1545mm	4	88317	£933.96
1791mm	5	88319	£1,027.75
1945mm	5	88321	£1,104.48

Specification

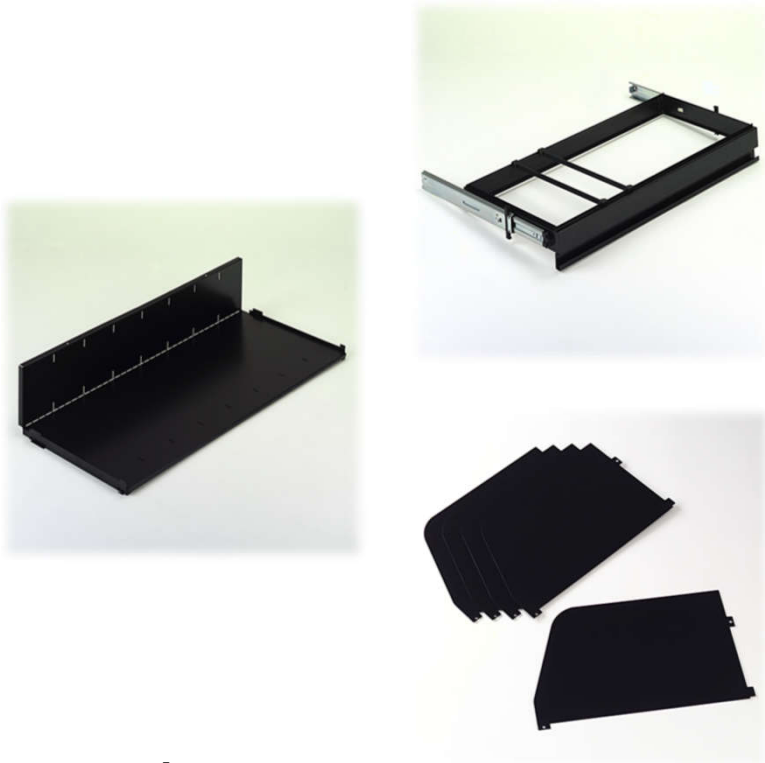
Welded internal frames for strength & stability
 Double skinned doors with soft close hinges
 Concealed noise absorbing door liners
 Recessed handle detail
 Option of colour coded handles
 Full range of internal options
 Adjustable shelf positions
 Key lock (500 differs / mastered)
 Levelling feet (+15mm)
 UK designed & manufactured
 15 year guarantee

Finishes: RAL 9010, 9016, 7035, 9006 and 9005
 N.B. Other colours are available on request - POA

1000w x 470d

Height	Rows of A4*	Code	RRP
719mm	2	88308	£849.20
995mm	2	88310	£872.98
1085mm	3	88312	£897.58
1190mm	3	88314	£922.19
1299mm	3	88316	£971.35
1545mm	4	88318	£1,019.91
1791mm	5	88320	£1,084.11
1945mm	5	88322	£1,161.66

Cupboard Internals



800w x 470d

Internal Fittings	Code	RRP
10mm Plain Steel Shelf	81653	£59.84
25mm Combination Shelf	81657	£70.97
25mm Adjustable Combination Shelf	81870	£88.67
Pull Out Filing Frame	81659	£202.59
Drop in Drawer (Pull Out Filing Frame)	81842	£158.24
Coat Shelf with Underside Rail	81675	£115.78
Slotted Steel Shelf	81655	£71.99
Pack of 5 Metal Dividers (Slotted Shelf)	81002	£69.50

1000w x 470d

Internal Fittings	Code	RRP
10mm Plain Steel Shelf	81652	£62.37
25mm Combination Shelf	81656	£73.77
25mm Adjustable Combination Shelf	81871	£92.20
Pull Out Filing Frame	81658	£206.46
Drop in Drawer (Pull Out Filing Frame)	88003	£167.63
Coat Shelf with Underside Rail	81673	£117.28
Slotted Steel Shelf	81654	£74.78
Pack of 5 Metal Dividers (Slotted Shelf)	81002	£69.50

Internal Fittings

Internals are finished in RAL 9005 Black as standard and come factory fitted to your specification.

Internals are height adjustable to your preference via our cabinets built in ladder track system. We advise that pull-out filing frames are installed in the lower half of cupboards. A safety interlock comes as standard.

Finishes: RAL 9005

N.B. Other colours are available on request - POA

Goodwood Plus Drawers



800w x 470d



Height	Drawers	Code	RRP
719mm	2	88329	£1,070.85
995mm	3	88331	£1,279.17
1085mm	3	88333	£1,312.79
1299mm	4	88335	£1,572.72

1000w x 470d

Height	Drawers	Code	RRP
719mm	2	88330	£1,135.51
995mm	3	88332	£1,354.11
1085mm	3	88334	£1,389.67
1299mm	4	88336	£1,651.23

Specification

- Welded internal frames for strength & stability
- Recessed handle detail
- Option of colour coded handles
- Fully extending drawers
- Multi-ball bearing runners
- Drawer safety interlock - one at a time opening
- Adjustable rear rail for A4/FC hanging files
- Drawers file 'spine-up' A4 lever arch files
- Key locks (500 differs / mastered)
- Levelling feet
- UK designed & manufactured
- 15 year guarantee

Finishes: RAL 9010, 9016, 7035, 9006 and 9005
 N.B. Other colours are available on request - POA

Drawer Options	Code	RRP
Counterbalance Weight 800w	87051	£59.61
Counterbalance Weight 1000w	87050	£59.61
Individually Locking Drawers x2	IL2	£145.53
Individually Locking Drawers x3	IL3	£218.26
Individually Locking Drawers x4	IL4	£290.99

Goodwood Plus Recycling



Specification

- Welded internal frames for strength & stability
- Recessed handle detail
- Double skinned doors with soft close hinges
- Concealed noise absorbing door liners
- Option of colour coded handles
- 1x recessing recycle flap per door
- 2x black metal bins with cut-out handles
- Key lock (500 differs / mastered)
- Levelling feet (+15mm)
- UK designed & manufactured
- 15 year guarantee
- Vinyl signage available – POA

Finishes: RAL 9010, 9016, 7035, 9006 and 9005
N.B. Other colours are available on request - POA

800w x 470d

Height	Recycle Points	Code	RRP
995mm	2	88339	£1,325.26
1085mm	2	88341	£1,352.14
1190mm	2	88343	£1,379.17

1000w x 470d

Height	Recycle Points	Code	RRP
995mm	2	88340	£1,382.87
1085mm	2	88342	£1,411.32
1190mm	2	88683	£1,439.55

Options	Code	RRP
Right Hand Confidential Security Slot	RH-SEC	£56.88
Left Hand Confidential Security Slot	LH-SEC	£56.88
Vinyl Signage for Recycle Points	VINY	POA

All Goodwood recycle cabinets include two steel recycle bins with rubber grommet handles – Bin sizing: 680h x 337w x 388d.

Goodwood Plus Towers



600h x 800d

Width	Type	Code	RRP
415mm	LH	80355	£898.54
415mm	RH	80356	£898.54

705h x 800d

Width	Type	Code	RRP
415mm	LH	80350	£929.63
415mm	RH	80351	£929.63

1114h x 800d

Width	Type	Code	RRP
457mm	LH	80386L	£1,578.65
457mm	RH	80386R	£1,578.65

Options	Code	RRP
MFC Top (Selected Finishes)	MFC	£100.36
200h Planter Top (Excl. Liners) - 1114h	88347	£321.86
Planter Liner Box (Set of 2)	16880	£125.14
Mechanical Combination Lock	SUD4	£69.52
Master Key (+£9.95 P&P)	MK	£22.92



Specification

- Welded internal frames for strength & stability
- Under-desk, desk high & desk end models
- Free running pull-out storage section
- Multi-ball bearing runners
- Concealed anti-tilt castor & counterweight
- 2 x adjustable shelves (1114h)
- 1 x adjustable shelf & 1 x personal drawer (600/705h)
- Levelling feet
- Key locks (500 differs / mastered)
- Metal d-handle in brushed silver
- UK designed & manufactured
- 15 year guarantee

Finishes: RAL 9010, 9016, 7035, 9006 and 9005
 N.B. Other colours are available on request - POA

Goodwood Plus Pedestals



315w x 555d

Height	Drawers	Code	RRP
478mm	2	94060	£366.23
551mm	3	94073	£376.88
628mm	3	94071	£382.17

415w x 555d

Height	Drawers	Code	RRP
478mm	2	94000	£366.23
551mm	3	94020	£376.88
628mm	3	94011	£382.17

Options	Code	RRP
315mm Fabric Seat Cushion (Fixed)	CUSH315	£115.88
415mm Fabric Seat Cushion (Fixed)	CUSH415	£115.88
Mechanical Combination Lock	SUD4	£69.52
Master Key (+£9.95 P&P)	MK	£22.92



Specification

Welded internal frames & base for strength & stability
 4mm one piece steel trim top
 Pressed one piece steel body
 Drop in pen tray & file bar
 Multi-ball bearing runners
 Concealed anti-tilt 5th castor
 Mobile castors
 Key locks (1000 differs / mastered)
 Recessed side pull for drawers
 UK designed & manufactured
 15 year guarantee

Finishes: RAL 9010, 9016, 7035, 9006 and 9005
 N.B. Other colours are available on request - POA

Contact us for bespoke pedestal designs, MFC or plywood fronts, alternative locking solutions and accent colours can be offered to suit your style and space.
info@metaloffice.co.uk / 01638 711 844.

Goodwood Plus Desk Drawer



384w x 500d



Specification

One piece steel body
Two heavy duty steel fixing brackets
Drop in pen tray
Multi-ball bearing runners
Designed for sit-stand desks
Finished double skinned steel drawer front
Includes 12 no. heavy duty fixings for desk underside
Key lock (500 differs / mastered)
Recessed underside finger pull
UK designed & manufactured
5 year guarantee

Finishes: RAL 9010, 9016, 7035, 9006 and 9005
N.B. Other colours are available on request - POA

Height	Drawers	Code	RRP
144mm	1	87467	£231.90
164mm	1	87467S	£240.32

Drawer Options

Options	Code	RRP
Free Issued MFC Drawer Front	FIDR	N/A
MFC Drawer Front (Selected Finishes)	MFC	£23.79
Mechanical Combination Lock	SUD4	£62.50
Digital Combination Lock	GEMD	£87.23
Special RAL Colour to Drawer	SRAL	£32.19
Accent Colour Drawer Front Only	ACNT	£24.98
Master Key (+£9.95 P&P)	MK	£22.92

Contact us for bespoke desk drawer designs, MFC or plywood fronts, alternative locking solutions and accent colours can be offered to suit your desk.

info@metaloffice.co.uk / 01638 711 844.

Nest Lockers – Education & Leisure



300w x 470d

Height	Configuration	Code	RRP
1791mm	1h x 1w	83521	£347.75
1791mm	2h x 1w	83522	£373.70
1791mm	3h x 1w	83523	£398.33
1791mm	4h x 1w	83524	£436.31
1791mm	5h x 1w	83525	£461.95
1791mm	6h x 1w	83526	£487.28

380w x 470d

Height	Configuration	Code	RRP
1791mm	1h x 1w	83501	£398.48
1791mm	2h x 1w	83502	£411.40
1791mm	3h x 1w	83503	£438.56
1791mm	4h x 1w	83504	£461.58
1791mm	5h x 1w	83505	£487.27
1791mm	6h x 1w	83506	£512.37

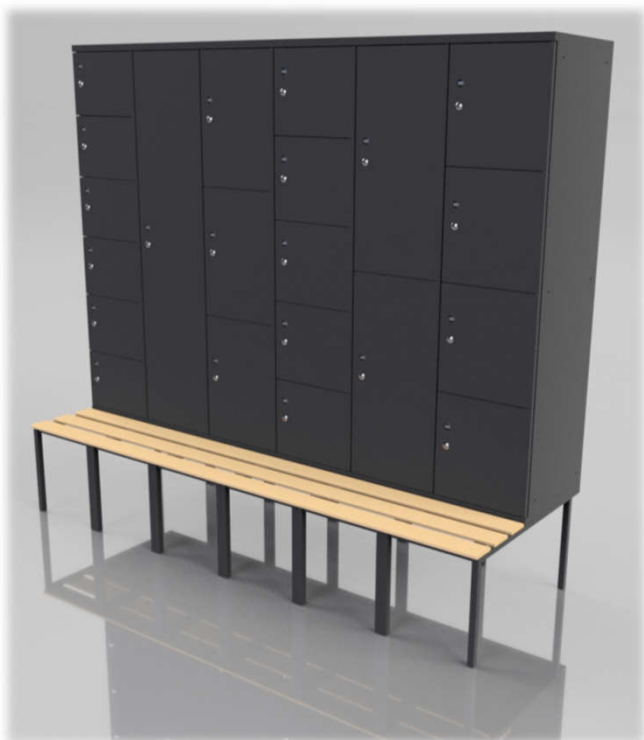
Specification

- Mechanically fixed front frame for door alignment
- Single skinned doors with stiffener
- Laminate number disc (flush fit)
- Innovative concealed hinge system
- Adjustable shelf positions
- Key locks (500 differs / mastered)
- Rubber buffer feet
- 1 x coat hook per compartment (1 door & 2 door)
- UK designed & manufactured / 5 year guarantee
- Gang together on site for extra stability
- Available with locker stands & seating
- Custom door designs - POA

Finishes: RAL 9010, 9016, 7035, 9006 and 9005
N.B. Other colours are available on request - POA

See page 24 for 450mm wide Nest lockers, Nest locker internal compartment dimensions & Nest locker options.

Nest Lockers – Education & Leisure



450w x 470d

Height	Configuration	Code	RRP
1791mm	1h x 1w	83507	£436.68
1791mm	2h x 1w	83508	£461.62
1791mm	3h x 1w	83509	£487.27
1791mm	4h x 1w	83510	£512.13
1791mm	5h x 1w	83511	£538.02
1791mm	6h x 1w	83512	£562.70

Options	Code	RRP
Mechanical Combination Lock - per door	SUD4	£91.76
Electronic Combination Lock - per door	GEMD	£117.04
Non-Networked RFID Lock - per door	PULS	£224.95
100mm Adjustable Plinth 600w (300w)	PLIN60	£123.69
100mm Adjustable Plinth 760w (380w)	PLIN76	£143.22
100mm Adjustable Plinth 900w (450w)	PLIN90	£156.24
100mm High Sloping Locker Top	SLT	£79.84
435mm High Locker Seat Stand	LKST	POA
Master Key (+£9.95 P&P)	MK	£24.11

Internal Compartment Sizes:

Height – 1 door = 1700mm / 2 door = 830mm
 3 door = 540mm / 4 door = 399mm
 5 door = 310mm / 6 door = 250mm

Width – 300w = 240mm / 380w = 320mm
 450w = 390mm

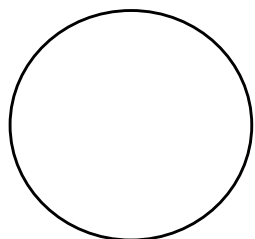
Depth – All Lockers = 445mm

Other door configurations are available and we cater for custom designs.
 Contact us on: 01638 711 844 | info@metalloffice.co.uk

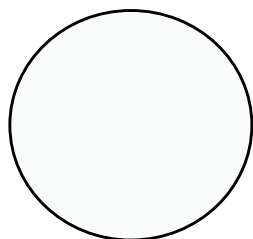
Guide to Finishes



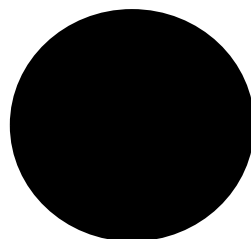
Our storage, lockers and pedestals are available in a range of epoxy-polyester & polyester powder coated finishes to suit your style and space. Inclusive metal work finishes are detailed below:



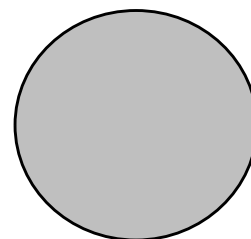
White RAL 9016



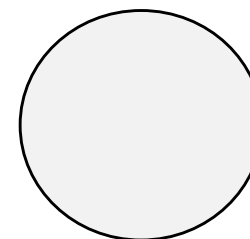
White RAL 9010



Black RAL 9005



Silver RAL 9006



Grey RAL 7035

*colours may vary on screens and print, to be used as a guide only

Steel Swatches – available upon request

Simply send us an email detailing the colours you would like to see: info@metaloffice.co.uk or call us on 01638 711 844 to discuss your requirements.

RAL Colour Chart

In addition to our standard colours, we also have access to the complete RAL colour chart. The uplift in price depends on the colour, finish and quantity of units - just let us know this information and we'll return an accurate price to you.

MFC & Glass Tops

We can source MFC and glass tops to fit our storage and simplify the supply chain for you. Prices are subject to the colour, finish and quantity of units - just let us know this information and we'll return an accurate price to you.

Fabrics & Upholstery

We have access to a wide range of fabrics to cover foam panels and seat cushions. Prices are subject to the colour, fabric and quantity of units - just let us know this information and we'll return an accurate price to you.

Guide to Locks



Key Lock - Good for: Most standard storage units

Features - 500/1000 key differs with master key facility

Advantages - Simple to use and cost effective



4 Digit Manual Combination Lock - Good for: Personal storage for fixed users

Features - Rotating tumblers, codes are set and reset by users, master key facility

Advantages - No lost keys, more secure than the 3 digit



4 Digit Manual Combination Lock - Good for: Personal storage for temporary users

Features - Rotating tumblers, codes are set by the user, the code clears after opening ready to accept a new user code, master key facility

Advantages - No lost keys, cost effective lock for temporary/public use storage



10 Digit Electronic Combination Lock - Good for: Personal storage for fixed users & Personal storage for both fixed and temporary Users

Features - Battery powered keypad. Codes can be set by users and reset with a master key & master code facility. Public use and private use options available.

Advantages - No lost keys, extra security, more options.



Non-Networked RFID Lock Good for: Personal storage units for both fixed and temporary users

Features - Battery powered contactless lock, RFID cards or fobs are presented to the lock to open/lock it. Public use or private use options available.

Advantages - No lost keys, no codes, building access cards may be used and multiple users can be assigned to locks.



Networked RFID Lock Good for: Personal storage units for both fixed and temporary users

Features - Mains powered contactless lock, RFID cards or fobs are presented to the lock to open/lock it. Public use or private use options available.

Advantages - No lost keys, no codes, existing building access cards may be used, low maintenance & software management

Guide to Options



Planter Top - As standard, our metal planters measure 200mm high x the width and depth of the storage unit. Corners are fully welded for a seamless finish. Planters have neoprene bump pads on the bottom and simply rest on top on the storage. Liners are supplied separately and available to buy from Metal Office, or they may be supplied by the planting contractor



Sloping Top - Sloping tops sit on the top of our storage units and are designed to prevent items being placed on top of units. This is generally to avoid clutter, or for security reasons. As standard, sloping tops are secured to the top of our storage using double sided tape (not provided) or can be mechanically fixed from the underside of the storage top.



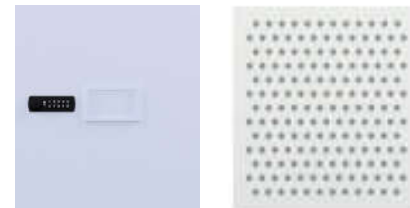
Top Box - Open back top boxes are open front and back, and measure 395mm high. Corners are fully welded for a seamless finish. As standard, top-boxes are secured to the top of our storage using double sided tape (not provided). If you wish to have mechanical fixings you will need to make us aware at the time of quotation as an upcharge will apply.



Top Box (Closed) - Closed back top boxes have an open front/closed back and measure 395mm high x the width and depth of the storage unit. Corners are fully welded for a seamless finish. As standard, top-boxes are secured to the top of our storage using double sided tape (not provided). As with open top boxes, these can be supplied with mechanical fixing.

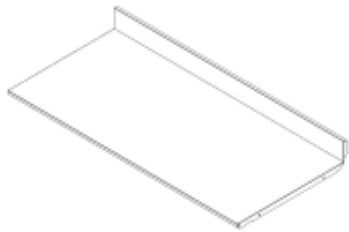


Frame Top - Our frame toppers offer the perfect match between steel & MFC. Powder coated steel tube create the frame, complimented with MFC top & base panel to showcase display items, or to add a new dimension to your storage solution.



Bespoke Doors - We have several perforation options: Including round and square. The perforations measure vary in size and shape. We also offer accent colour doors, metal business card = holders, laminate number discs and plain doors with vinyl manifestation.

Guide to Internals



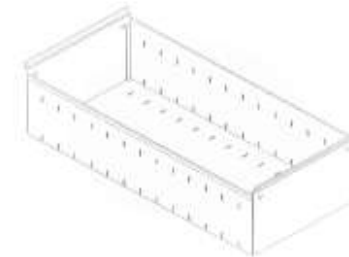
10mm Steel Shelf - At just 10mm profile, plain shelves are perfect for maximising filing capacities with A4 box/lever arch folders. Shelves come factory fitted to your specification and are height adjustable by the end-user.



Slotted Steel Shelf - Quite simply these are metal shelves with slots! Metal dividers fit into the slots to divide the shelf into sections, ideal for creating pigeon holes of equal or varying sizes. Shelves are height adjustable by the end user.



25mm Combination Shelf - Has a flush top surface just like a plain shelf but the underside of the shelf (pictured) has two return lips designed for hanging side-to-side suspended files with 330mm centres. At 25mm high, combination shelves may reduce filing capacities of A4 box/lever arch folders.



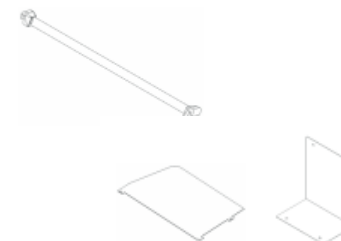
Drop in Drawer - Drawer bodies drop into our pull-out-filing-frames to create a drawer for cupboards & tambours. Perfect for easy access to loose items. Metal dividers are also available for the slotted drawer base to create organised sections



Pull Out Filing Frame - Frames are mounted on fully extending multi-ball-bearing runners and designed to offer easy access to side-to-side suspended files. A file bar is provided to enable easy front to back filing (1x bar/row on 800w and 2x bars/rows on 1000w). Our pull-out-frames have a safety interlock to prevent more than one frame being pulled-out at any one time. We recommend loading frames from the bottom up and not exceeding the unit's midway point, to minimise the risk of the unit tipping.



Coat Rail Shelf - A plain shelf with a side-to-side hanging rail fitted to the underside. This shelf is designed to fit into a 600d cupboard to accommodate hangers. Shelves are available for standard depth cupboards/tambours but the hanging rail will run front to back to accommodate hangers.



File Bar & Dividers - File bars fit into our drawer bodies to allow for front to back filing. Metal dividers (left image) are available in packs of 5 and fit our slotted shelves and slotted drawer bodies. Magnetic dividers can be used as bookends or dividers on all metal shelves and drawer bases

Specifications



Metal Office Equipment operate to BS EN ISO 9001:2015 and BS EN ISO 14001:2015

Product testing - Satra and FIRA.

Our products have been tested by the leading research, technology and testing organisations for the office furniture industry and have passed a range of the following performance tests: BS4875-7:2006, BS4875-8:1998 and or BS EN ISO 14073-2:2004, BS EN ISO 14073-3:2004, BS EN ISO 14074:2004

Cabinet construction

Storage cabinets are manufactured from high quality 0.7mm to 1.5mm gauge cold rolled steel. Cabinets are internally welded and reinforced to ensure stability and alignment. Our steel suppliers operate Quality Management Systems and hold certification in BS EN ISO 9001:2008.

Powder coating

Storage cabinets are powder coated with polyester or epoxy polyester powders, which are solvent free. These powders are designed to be cured at lower oven temperatures to help protect the environment and, we run in parallel to: BS EN ISO 2409:1995, BS EN ISO 2813:2000, BS EN ISO 6272:2004, BS EN ISO 6860:198 and compliant to BS 3900 E6, BS 3900 D5, BS 3900 Part E13 and BS 3900 part E123.

Drawer slides (Drawer runners)

All our slides are designed to meet national and international test standards. The multi bearing telescopic slides on lateral storage cabinets are manufactured from 1.75mm cold rolled steel with an interlocking safety mechanism to prevent more than one drawer being opened at a time and facilitates a 100% opening of the drawer. The slides manufactured in Europe do not contain any of the restricted or prohibited substances referred to in the ELV (End of Life Vehicles) 2000/53/EC (27.06.02), the RoHS (Restriction of Hazardous Substances) 2002/95/EC (27.01.03), or the WEEE (Waste Electrical & Electronic Equipment) 2002/96/EC (27.01.03) Directives.

Drawer bodies

The lateral cabinet drawer bodies are mounted on multi bearing telescopic slides and are designed to hold up to 60Kgs of suspended files or up to 60Kgs of free standing materials, spread evenly across the base of the drawer body. All lateral drawer cabinets must be evenly loaded from the lowest drawer up. Pedestal drawer bodies are mounted on multi-ball-bearing telescopic slides and are designed to hold up to 45Kgs of suspended files or up to 45Kgs of free standing materials, spread evenly across the base of the drawer body. All pedestal drawers must be evenly loaded from the lowest drawer up.

Counterweights

Counterweights are recommended in 2 and 3 lateral drawer cabinets if they are to be free standing and not ganged together or fitted with a secured worktop over a run of cabinets. Upon request, counterweights are factory fitted in the back of the cabinet and minimise the possibility of the cabinet tipping over when a fully loaded drawer is opened. All lateral drawer cabinets must be evenly loaded from the lowest drawer up.

Lateral storage locks

Our lateral storage cabinets are fitted with a 16.5mm diameter "double bit" lock for increased security, and have a 500 key differs. The robust double entry 'car style' key fits both ways, is not handed and can be removed in the unlocked position to prevent possible key damage. A folding and fixed key is supplied as standard. The numbered lock barrels* aid quick key replacement, can be overridden by a master key* and are removable, so the barrel can be changed if so required.

Tambours and pedestals locks

Our tambours and pedestals cabinets are fitted with a 16.5mm diameter "double bit" lock for increased security and have a 1000 key differs. The key can be removed in the unlocked position to prevent possible key damage. A folding and fixed key is supplied as standard. The numbered barrels* aid quick key replacement and can be overridden by a master key*. The design of the tambours and pedestals means the lock can be quickly changed if so required.

Specifications Cont.



Replacement standard, *master and *barrel removal keys

Standard replacement keys, master and barrel removal keys are available from us on 01638 711 844. Please quote the type of cabinet and number on the lock barrel. As an alternative, standard replacement keys are also available from www.Fastkeys.co.uk. Please note: Fastkeys is an independent company and is not connected to Metal Office in anyway.

Cupboard door hinges

Our two door storage cupboards use easy access 110° opening hinges, with self-close action, clip-on /off system, 3-dimensional hinge adjustment, with the option of soft close system and are tested to the DIN ISO procedures: Durability acc. Din 68 857, RaIGZ 430 ½ 80,000 cycles, 40 newtons additional load. High tear out strength up to 100 newtons, Vertical loading (DIN EN 1153) up to 330 newtons.

Internal fittings for cupboards and tambours

The internal fittings for cupboards and tambours are factory fitted to your specification. Pull-out filing frames are mounted on telescopic slides, with interlocking safety mechanism to prevent more than one being opened at a time. The ranges of internal shelves are all adjustable and removable by the end user. Shelves fitted into 1000mm wide cabinets hold up to 56Kgs and shelves fitted into 800mm wide cabinets hold up to 45Kgs - spread evenly across the shelf. All our internal fittings comply with BS4875-7:2006, BS4875-8:1998 and or BS EN ISO 14073-2:2004, BS EN ISO 14073-3:2004, BS EN ISO 14074:2004.

Levelling Feet

Levelling feet are fitted to all lateral storage and tambours and are internally adjustable. Cabinets must be levelled and height adjusted when empty and supported. The standard levelling feet have up to 15mm of height adjustment.

Cleaning, maintenance and care of products

We recommend that cabinets be cleaned with warm water and a mild environmentally friendly detergent solution. A damp cloth can be used to remove dust particles. Do not use abrasive or solvent based cleaners as that may permanently damage the paint finish.

Terms & Conditions



1. Definitions

- 1.1 The "Buyer" means the Account Applicant or person who buys or agrees to buy Goods from the Seller.
- 1.2 The "Seller" means Metal Office Equipment Limited.
- 1.3 "Conditions" means the Conditions of Sale set out in this document and any special conditions agreed in writing by the Seller.
- 1.4 "Goods" means any items offered for sale by Metal Office Equipment Limited and requested by the "Buyer".
- 1.5 "Order" means the "Buyer's" request to purchase any Goods. This includes Standing Orders and/or Subscriptions.
- 1.6 "Price" means that amount quoted in Metal Office Equipment Limited current price list, or quotation, plus delivery costs and any applicable Value Added Tax or other taxes or duties.
- 1.7 "Force Majeure Event" means any circumstances beyond Metal Office Equipment Limited reasonable control, including (but not limited to) accidents, flood, fire, natural disasters, industrial disputes, as a result of which the Goods are unavailable.
- 1.8 "Website" means Metal Office Equipment Limited Website to be found at www.metaloffice.co.uk.

2. Conditions

- 2.1 These "Terms and Conditions" do not affect your statutory rights as a consumer.
- 2.2 All contracts of sale made by the Seller shall be deemed to incorporate these terms and conditions which shall prevail over any other document or communication from the Buyer.
- 2.3 If any amendments to this terms and conditions are required then they are to be confirmed in writing by Metal Office Equipment Limited.
- 2.4 Acceptance of delivery of Goods shall be deemed conclusive evidence of the Buyers acceptance of these Conditions.

3. Orders

- 3.1 All Buyers orders, are subject to acceptance by the Seller, in the form of a written customer acknowledgement, and are subject to our general terms and conditions, which are available upon request.
- 3.2 Any additional or any conflicting terms and conditions set out in the Buyer's purchase order shall be null and void and shall not form any part of any contract between the Seller and the Buyer.

4. Prices

- 4.1 The Price shall be that on the Seller's current list price, Website, or if applicable the price contained in the Seller's Quotation
- 4.2 Should the Goods price change between receipt of order and dispatch, the buyer will be notified and given the opportunity to cancel the order and receive a full refund.
- 4.3 All Prices are exclusive of VAT and charges for packing, postage and carriage shall be paid in addition.

5. Payment

- 5.1 In the case of new accounts, payment must be made in full, by proforma payment, at the time of order placement, unless, a separate written agreement by the Seller is in place.
- 5.2 In the case of all other sales, subject to the Buyer maintaining a credit status acceptable to Seller, payment of all invoices is due 30 days nett from the date of invoice.
- 5.3 Time of payment shall be of the essence, and any failure to pay shall entitle the Seller, at its option, to treat the Contract as repudiated by the Buyer, or to delay delivery until paid in full.
5. Interest on Overdue Invoices
- 5.1 If payment is not received by the due date on the invoice, interest will be charged at 2% per calendar month, above Barclay's Bank PLC base lending rate, from the due date for payment, and until payment is received.

6. Ownership and Risk

- 6.1 The Seller remains the owner of the Goods affected by the Contract until the Seller has been paid in full for such Goods, and if applicable, any charges for packing, postage and Carriage.
- 6.2 Until ownership of the Goods has passed to the Buyer, the Buyer is responsible for taking all necessary steps to prevent damage, loss or harm to the Goods and shall insure the Goods at the their expense and for the benefit of the Seller.
- 6.3 The Buyer will hold the Goods and will resell them on the Sellers behalf, if instruct you to do so.
- 6.4. If any act or proceedings shall be commenced in which the Buyer's solvency is concerned, all monies under any transaction covered by these Conditions shall become immediately due and payable.
- 6.5 If the Buyer becomes insolvent before the Seller has received full payment for the Goods, the Seller may take the Goods back at the Buyers expense. In the event that Buyer becoming insolvent, the Buyer authorises the Seller or Sellers agents or representatives to enter the Buyers, or Buyers clients premises in order to take back the Goods or to inspect the Goods.
- 6.6 The risk in Goods shall pass to the Buyer upon delivery of the Goods or upon the Goods being appropriated to the Buyer. but kept at the Seller's premises at the Buyer's request.

7. Damaged or Defective Goods

- 7.1 The Buyer shall inspect the Goods immediately upon receipt and shall notify the Seller. within 48 hours of delivery, if the Goods are damaged or do not comply with any of the Contract. If the Buyer fails to do this he is deemed to have accepted the Goods.

Terms & Conditions



7.2 Any Goods in respect of which any claim of defect or damage is made shall be preserved by the Buyer, intact, together with the original packing at the Buyer's risk and either a) Be retained by the Buyer for a reasonable period to enable the Seller or its agent to inspect or Collect the Goods or b) At the Seller's option returned by the Buyer to the Seller who will refund the cost of postage and packing to the Buyer if the Goods are in fact defective.

7.3 The Buyer is required to send an electronic photograph of any damage within 48 hours.

7.4 The Buyer will be liable for the cost of remedying any damage to the Goods, where such damage has, in the opinion of the Seller, been caused by the Goods being incorrectly handled, transported, stored or installed.

7.5 Goods deemed to be damaged by the Buyer must be paid for in full. The transport costs for the return of the goods and repair costs must be met in full by the Buyer.

7.7 Claims for damage, 48 hours after the receipt of the Goods, will not be considered.

8. Warranty and Liability

8.1 The Seller warrants that the Goods will at the time of delivery correspond to the description given by the Seller. Except where the Buyer is dealing as a consumer (as defined in the Unfair Contract Terms Act 1977, Section 12) all other warranties, conditions or terms relating to fitness for purpose, merchantability or condition of the Goods, whether implied by Statute, Common Law or otherwise are excluded and the Buyer is satisfied as to the suitability of the Goods for the Buyer's purpose.

8.2 While every effort is made to ensure that the Goods specifications on the Website, price list and any other documentation are accurate, the Seller may add or remove functionality on the Goods as they are developed. Inevitably there will be a delay before the Goods descriptions are updated to reflect any changes. Therefore, it is highly recommended that an evaluation of the chosen Goods is carried out to ensure that it meets your functional requirements prior to purchase.

8.3 Except as may be implied by law where the Buyer is dealing as a consumer, in the event of any breach of these Conditions by the Seller the remedies of the Buyer shall be limited to damages which shall in no circumstances exceed the price of the Goods and the Seller shall under no circumstances be liable for any indirect, incidental or consequential damage.

8.4 The Seller shall be under no liability in respect of any defect arising from fair wear and tear, wilful damage, negligence, abnormal working conditions or misuse

9. Delivery

9.1 The cost of the delivery of the Goods is exclude from price list, web site or quotation unless otherwise stated.

9.2 Whilst every reasonable effort shall be made to keep any delivery date, time of delivery shall not be of the essence, and the Seller shall not be liable for any losses, costs, damages or expenses incurred by the Buyer or any other person or Company arising directly or indirectly out of any failure to meet any estimated delivery date and time.

9.3 Delivery of the Goods shall be made to the Buyer's address or nominated address and the Buyer shall make all arrangements necessary to take delivery of the Goods whenever they are tendered for delivery.

9.4 All deliveries exclude any form of installation of the goods, unless otherwise agreed in writing and via a separate quotation.

10. Cancellation of orders

10.1 The Buyer may cancel an order, up to 48 hours, after receiving the customer order acknowledgement, without incurring costs, providing; a) The cancellation is in writing, acknowledged by the Seller, and the delivery or collection date for the goods is at least working 7 days hence. b) The goods were standard design and no custom samples have been manufactured. 10.2 Request for cancellation of an order after 48 hours and within 120 hours incurs an administration charge of 10% providing; a) The cancellation is in writing, acknowledged by the Seller, and the delivery or collection date for the goods is at least working 7 days hence. b) The goods were standard design and no custom samples have been manufactured. c) Manufacture of the goods has not commenced.

10.3 In the event of 10.1 a, and b, or 10.2 a, b, and c, not being applicable, the order value of the goods must be paid for in full.

10.4 Cancellations 120 hours after the customer order acknowledgement must be paid for in full.

10.5 Goods order in error, can only be cancelled if Conditions 10.1 a, and b, or 10.2 a, b, and c are fully met.

11. Force Majeure

11.1 In the event that the Seller is prevented from carrying out its obligations under a contract for sale as a result of any cause beyond its control such as but not limited to Acts of God, War, Strikes, Lock-outs, Flood and Failure of third parties to deliver goods, the Seller shall be relieved of its obligations and liabilities under such contract for sale for as long as such fulfilment is prevented.

12. No Waiver

12.1 The Seller's failure to insist upon strict performance of any provision of these Conditions shall not be deemed to be a waiver of its rights or remedies in respect of any present or future default of the Buyer in performance or compliance with any of these conditions.

13. Intellectual Property

13.1 All text, notes, illustrations and images reproduced on the Sellers Website, price list or any other documentation are the copyright of the author and are protected by intellectual property law worldwide. In accordance with the provisions of Intellectual Property legislation, private use only is permitted and any other use without the prior authorisation of the Seller is an infringement of the author's copyright and a violation of intellectual property rights.

14. Miscellaneous - Any contracts shall in all respects be construed and operate as an English contract and in conformity with English law.

14.2 If any part of these terms and conditions that is not fundamental is found to be illegal or unenforceable, such finding will not affect the validity or enforceability of the remainder of these terms and conditions.

Metal Office

Chiswick Avenue
Mildenhall
Suffolk
IP28 7AY
T: 01638 711844

E: info@metaloffice.co.uk
www.metaloffice.co.uk
Social: [@metalofficeuk](#)

Registered in England No: 2125717 | VAT No: 521 2053 06